

Nature Photography 101

Stan Malcolm



StanMalcolmPhoto.com

Agenda

- Context
- Cameras & Accessories
- Conditions
- Composition
- Technical Topics
- Editing
- Sharing
- Links



Context

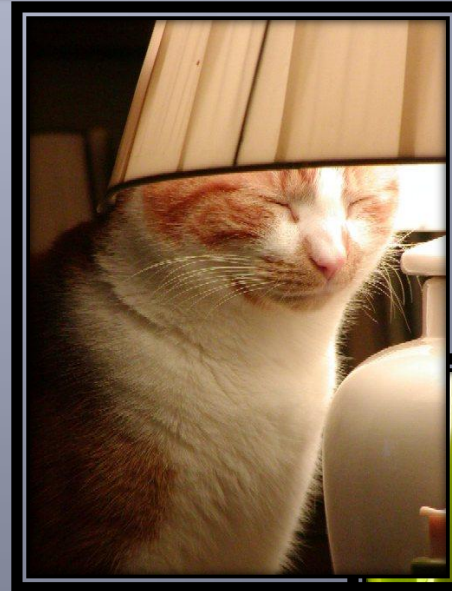
- Along the Air Line...

www.performance-vision.com/airline



Context

- StanMalcolmPhoto.com



Context



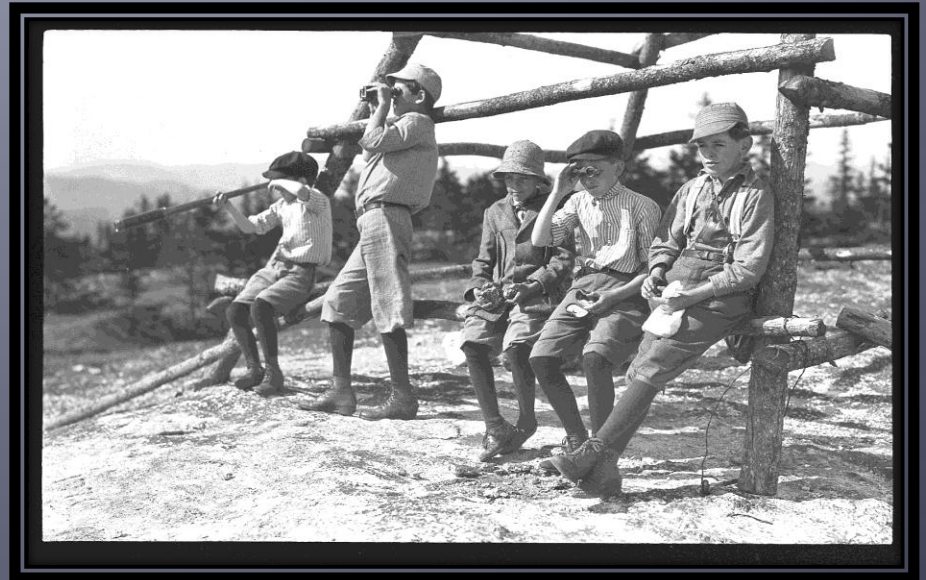
Context



Great Grandfather



Grandfather



Cameras

- “Nice picture. You must have a great camera!”



Cameras and Accessories

- *Camera Aspect Ratios: 3x4 or 2x3*
- Megapixels:
 - How many?
 - Twice as many isn't twice as sharp
- Optical versus Digital Zoom
- One lens versus several? Fixed versus Zoom?
- Camera Bag
- Tripod:
 - Sturdy; Quick Release; Allow Low & High shots

Conditions

- Time of Day

- Backlighting:



- Cloudy versus Sunny

- Wind: The Enemy!

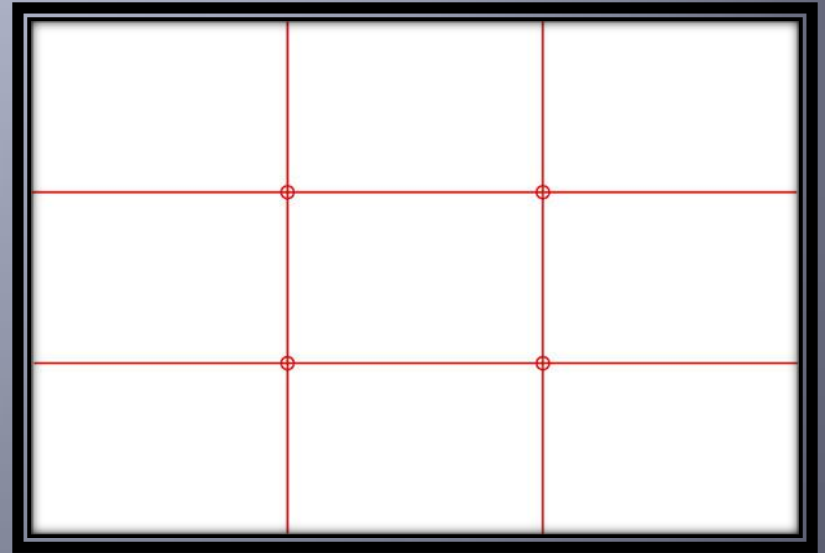
- Patience and Persistence

- Digital Pictures are Free! Take Plenty.

- Delete the Junk!

Composition

- Framing: Rule of Nines



Composition

- Framing: Rule of Nines
- Rules are Meant to be Broken



Composition

- Drawing the eye...



Composition

- Aspect Ratios

2x3



3x4



Ad hoc



Composition

- Figure and Ground



Composition

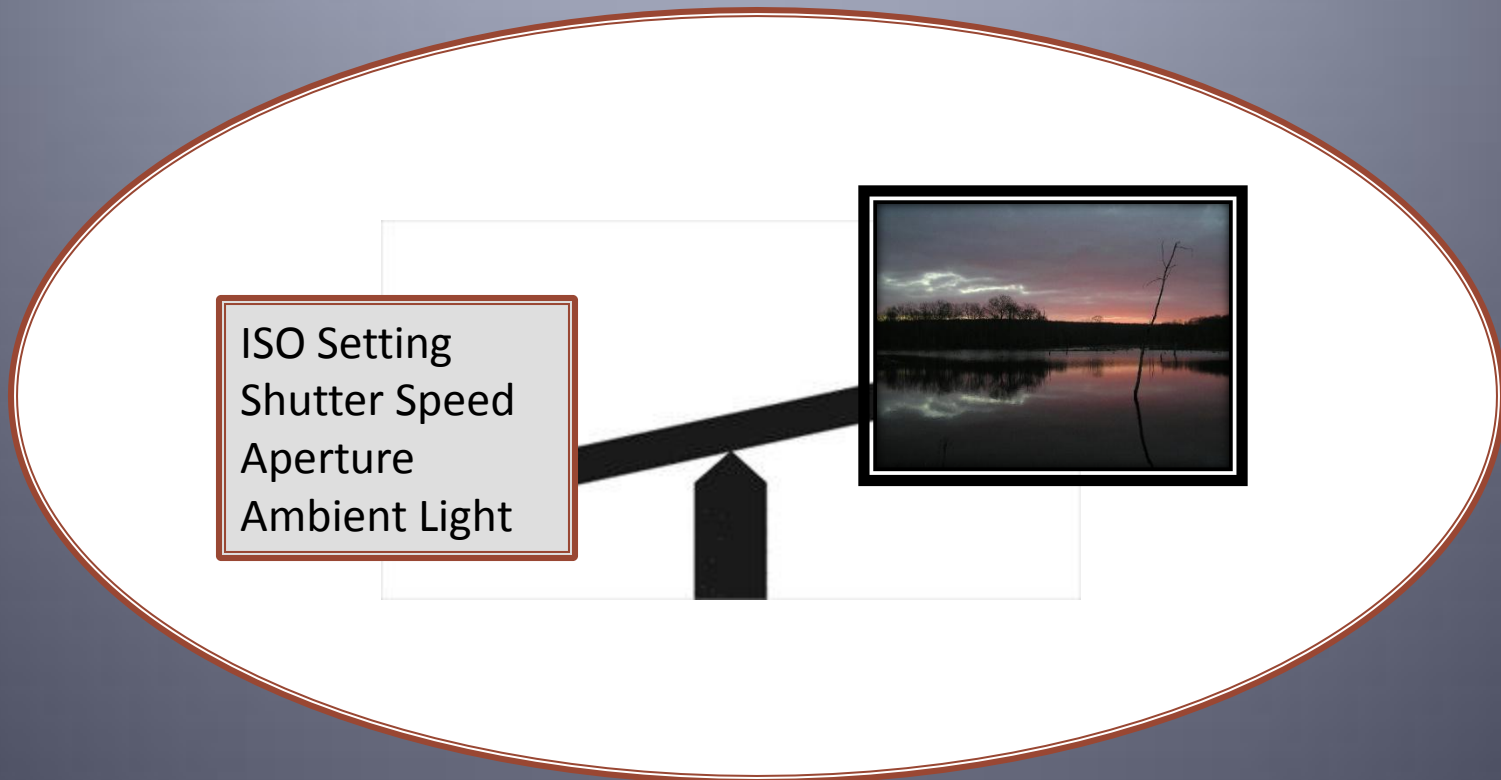


- Horizons



Technical

- A Balancing Act:



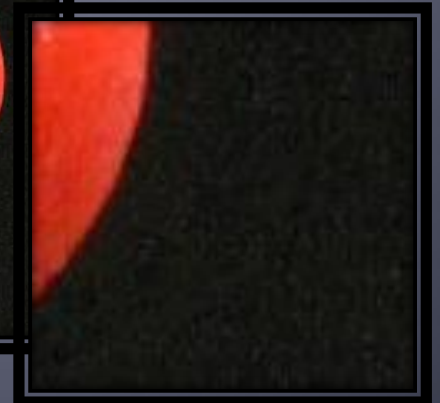
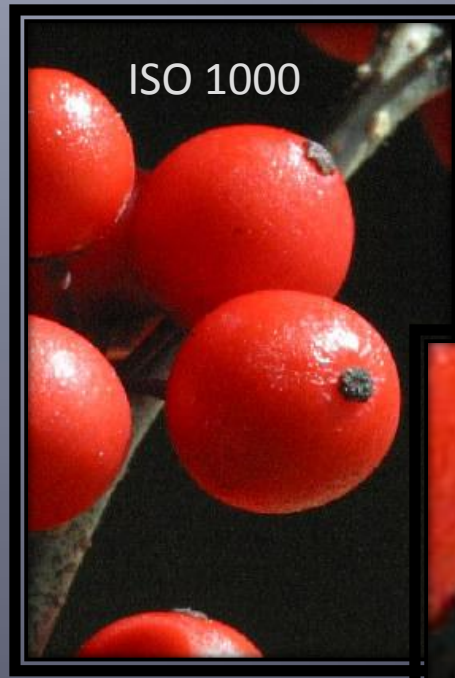
Technical

- ISO Setting:
 - Sensitivity to light: standards set by the International Organization for Standardization
 - 100 to 1000 typical; Higher on new cameras



Technical

- ISO Setting:
 - 100 = Low sensitivity; but fine grain (low “noise”)
 - 1000 = High sensitivity; Grrrain!



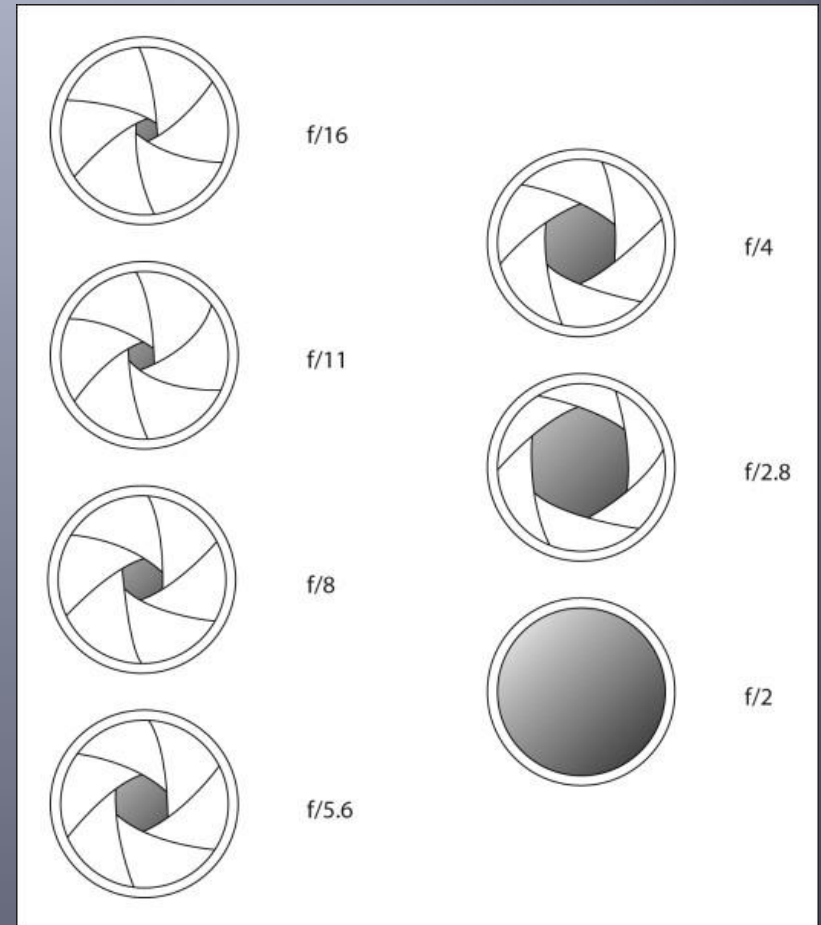
Technical

- Shutter Speed:
 - Low: under $1/60^{\text{th}}$
 - risk blur; deep.
 - Tripod
 - Pan
 - High: over $1/250^{\text{th}}$
 - sharp; shallow.
 - movement:
birds, sports, etc



Technical

- Aperture:
 - f/16 – small aperture, deep depth of field (background in focus)
 - f/2 – large aperture, shallow depth of field (background blurred)



Technical

- Depth of Field



Technical

- Macro Photography



Editing

- Software

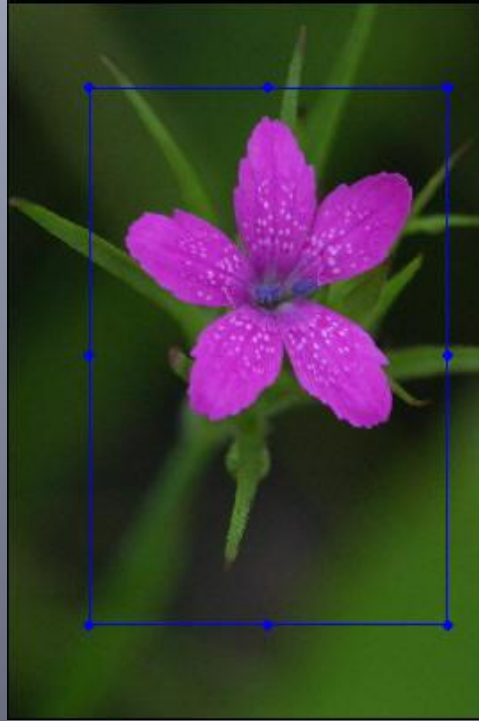
CAMEDIA Master Pro

Canon



Editing

- Cropping:



Editing

- Why Crop?:

- Aesthetics



- Print Aspect Ratios:

4x6

5x7

8x10

11x14

12x18



Editing

- Resizing: Print versus Screen versus Thumbnail



Editing

- Brightness
- Contrast
- Gamma = Brightness and Contrast correction

Increased Gamma



Original



Decreased Gamma



Editing

- “Color Temperature”



Cool

Warm



Editing

- Saturation



Original

Editing

- Sharpening



Sharing

- Printing:

- Home Printer



- Chain Store



- Web Service



- Camera Store



Sharing

- Web Services:



Sharing

- Web Site:



Links

- StanMalcolmPhoto.com
- Along the Air Line...
<http://performance-vision.com/airline>
- Community Wildlife Habitat of Colchester
<http://www.flickr.com/groups/colchesterwildlife>
- Photo.net
- digital-photography-school.com
- Photo Connection of Colchester
<http://www.photoconnectionoc.com>

Questions?



StanMalcolmPhoto.com

860-295-9711