

Along the Air Line...

Nature Photography on the Air Line Trail

Stan Malcolm



Along the Air Line...
<http://performance-vision.com/airline/>

StanMalcolmPhoto.com

Stan Malcolm



Eastern Connecticut photographer Stan Malcolm focuses on the natural world. He finds the extraordinary in objects and places we often overlook. An entomologist by training, Stan's photos have earned many juried awards and been published in newspapers, textbooks, and scientific publications.

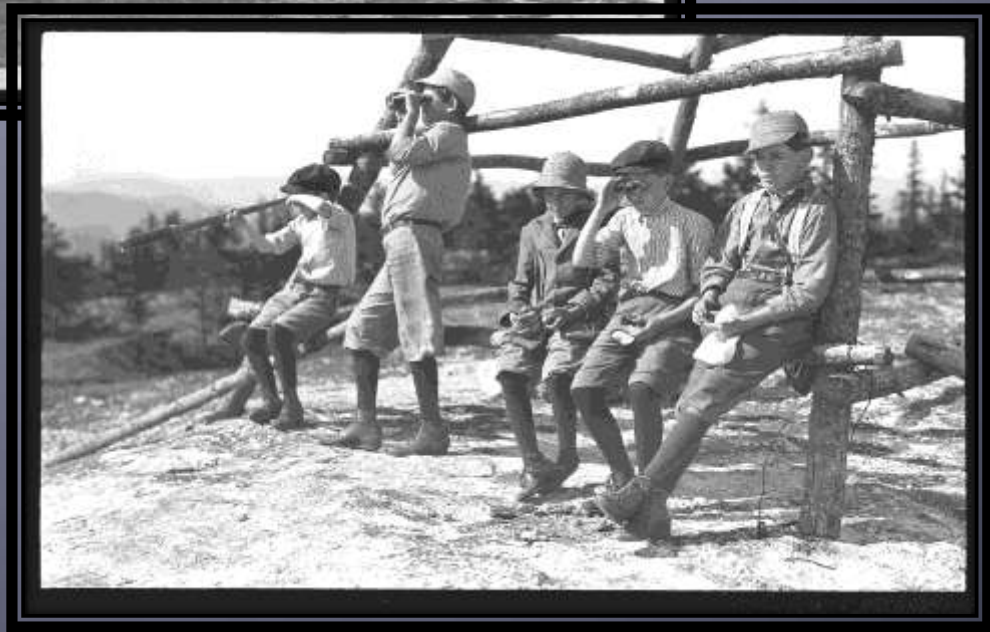


Stan carries on a family tradition of photography.

My Great
Grandfather's work

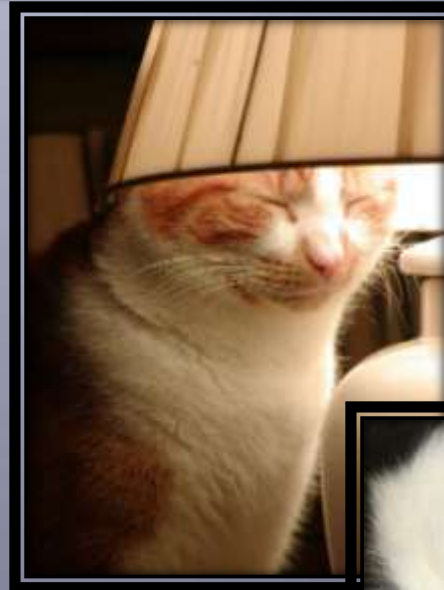


My
Grandfather's
Photos



Stan's General Photography

- StanMalcolmPhoto.com



The Air Line Trail

The Air Line was once a railroad renowned for its relatively straight course from Boston to New York - "as if by a line drawn through the air." You can still find lumps of coal left over from the steam era. Today the rail bed has been converted to a Connecticut linear park and hiking trail.



Stan's "Along the Air Line..." web site

- www.performance-vision.com/airline/



- Over 6,000 photos taken in all seasons
- Plants, Animals, Landscapes – everything you're likely to see on the trail

Trail Brochure Available at Town Halls in East Hampton, Colchester, Hebron, and Lebanon, CT – or as a PDF at Stan's web site.

The Air Line Trail

A Connecticut Greenway, State Linear Park, and Multipurpose Trail for non-motorized users

Guide & Map for the Towns of East Hampton, Colchester, Hebron and Lebanon

East Hampton

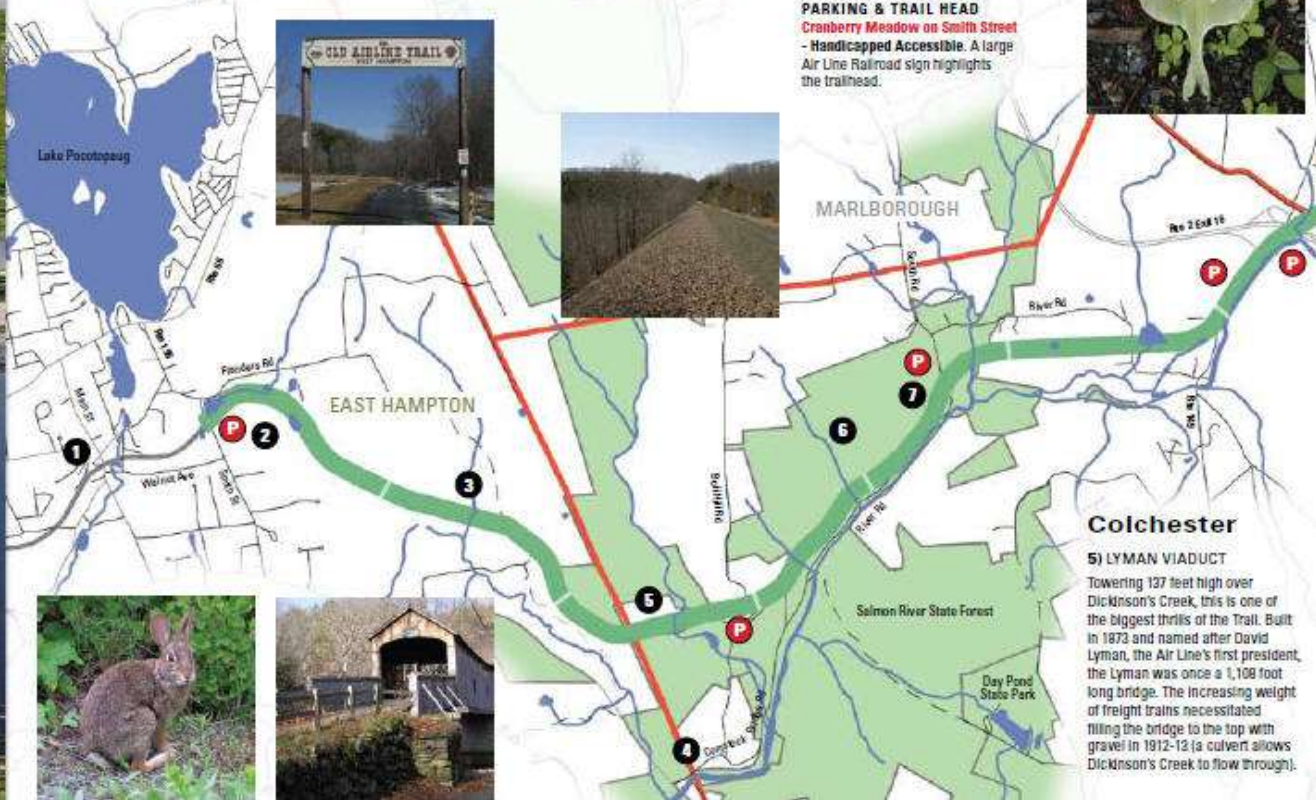
1) BELL TOWN VILLAGE CENTER & LAKE POCOTOPAUG
East Hampton is called "Bell Town" as it was the center of the bell making industry for the country. Taking a detour off the Trail at Cranberry Meadow onto Smith St. and traveling west leads to the Bell Town Village Center, a mecca for antique shoppers. Traveling north leads to the business center of East Hampton and Lake Pocotopaug. Caution is advised on busy roads.

2) CRANBERRY BOG
This pond offers benches for resting; the sights of wildflowers and sounds of bullfrogs in the summer; and picturesque ice skating and hockey games in the winter. Cranberry Meadow and Bog was once a natural cranberry producing bog. During the 1920's and 30's, the cranberries were harvested, transported to grocers, and bartered for groceries.

3) RAPALLO VIADUCT
Built in 1873 (as was its sister, the Lyman Viaduct, 1-1/2 miles east in Colchester), the Rapallo bears the name of a railroad director and was built for two train tracks. Originally a 1,380 ft. long bridge 60 ft. high above Flat Brook, the increasing weight of freight trains necessitated filling underneath it in 1913. The spectacular views of the marsh to the north and other natural surroundings make this a rare treat.

4) COMSTOCK BRIDGE
The Comstock Bridge was built in 1791 and rebuilt in 1860. It is one of only three remaining covered bridges in Connecticut. The Comstock Bridge links East Hampton and Colchester and is approximately 1-1/4 miles south of the intersection of Colchester's Bull Hill Road and the Air Line Trail. The bridge is open to pedestrian traffic and has a picnic area nearby.

PARKING & TRAIL HEAD
Cranberry Meadow on Smith Street - Handicapped Accessible. A large Air Line Railroad sign highlights the trailhead.



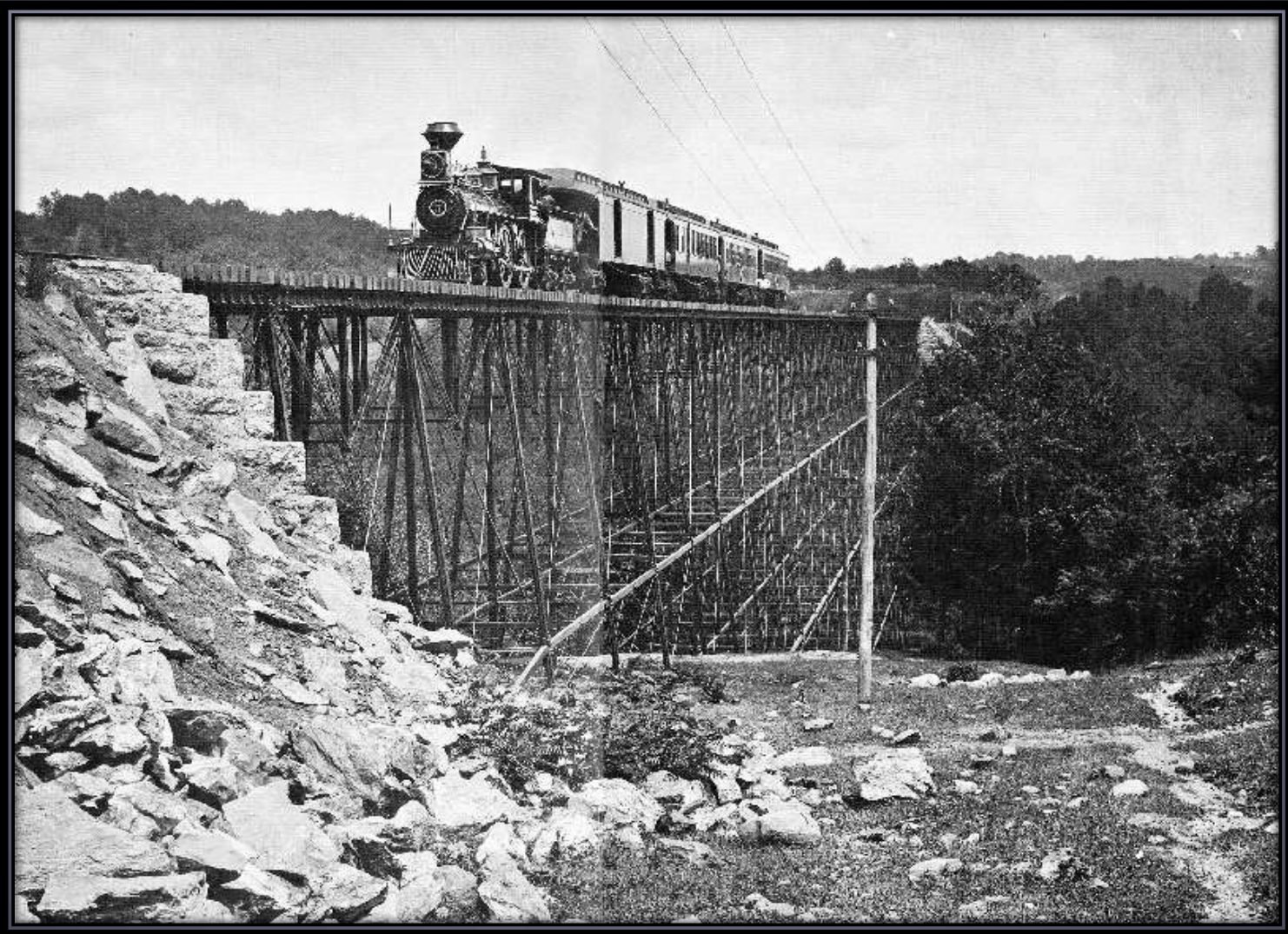
Highlights – East Hampton center



Highlights – Cranberry Bog



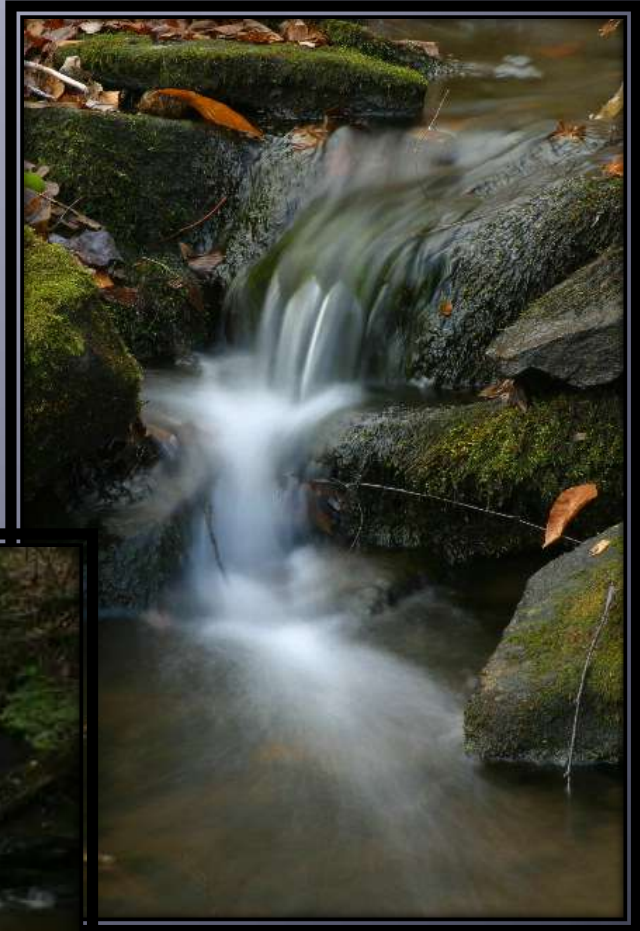
Highlights – Lyman Viaduct “then”



Highlights – Lyman Viaduct “now”



Highlights – Minor Waterfalls



Highlights – Rock Cuts



Highlights – River Road Bridge

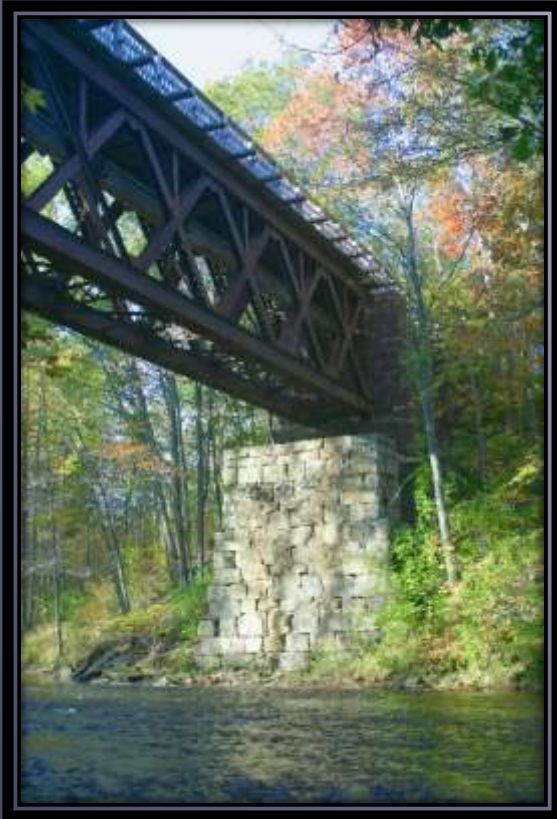


Brownstone, Dated 1887.

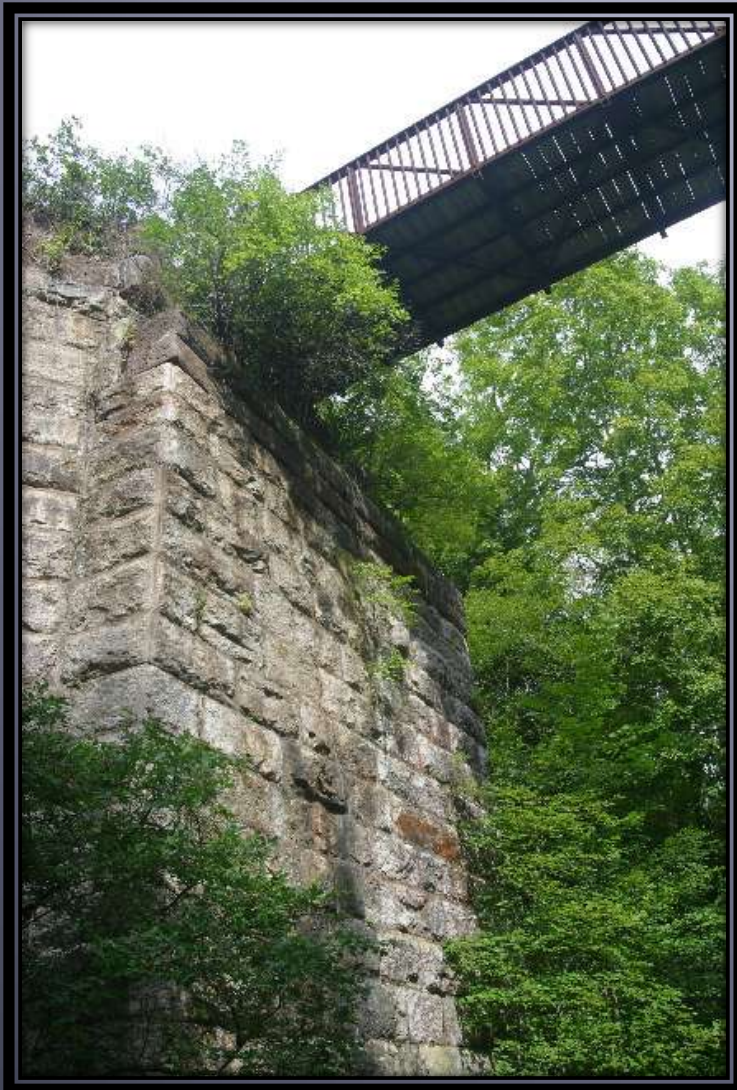
Each stone in the arch is numbered, suggesting that some portions were pre-cut before on-site assembly.



Highlights – Blackledge River Bridge



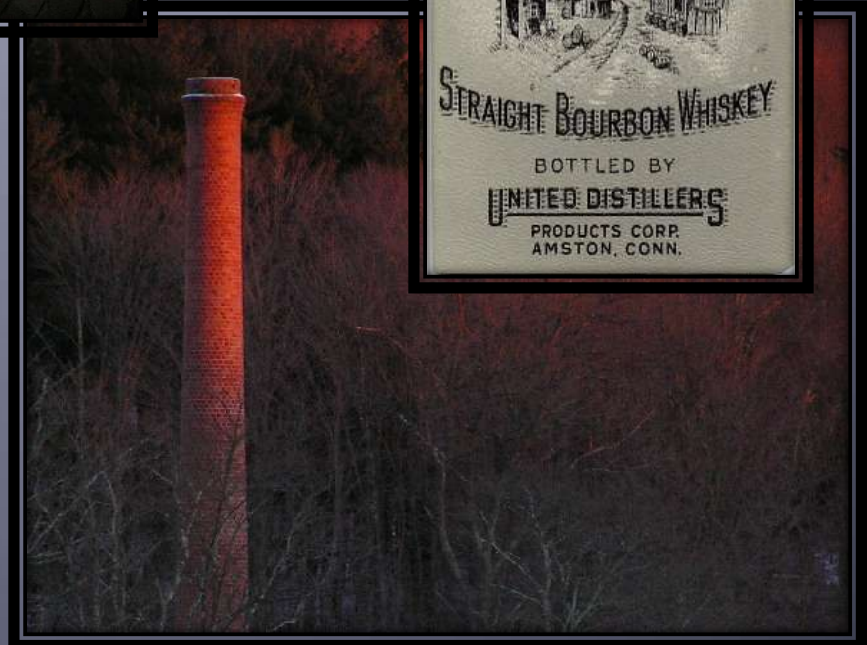
Highlights – Jeremy River Bridge



Highlights – Grayville Falls



Highlights – United Distillers ruins



Highlights – Cellar Holes



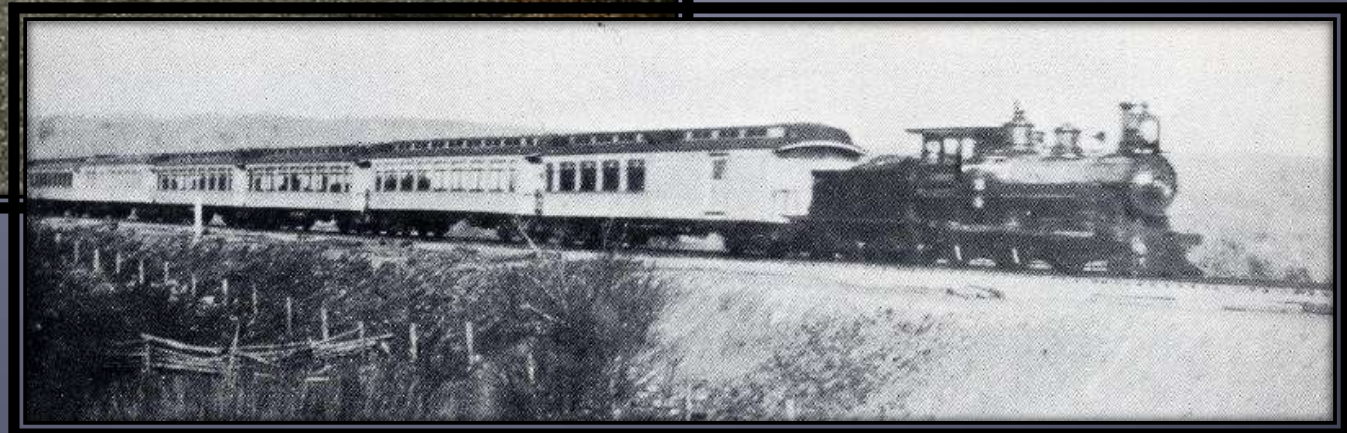
Highlights – Raymond Brook Marsh



Highlights – Ghost Run



Around Halloween, the trail hosts the Ghost Run, named in honor of the Ghost Train which ran white coaches through the night over 100 years ago.



Highlights – Lebanon to Willimantic



Gallery Tour



“Electric” Sunrise – Raymond Brook Marsh, Hebron, CT

Gallery Tour



Foggy Morning on the Marsh – Raymond Brook Marsh, Hebron, CT

Gallery Tour



Winter Dawn on the Marsh – Raymond Brook Marsh, Hebron, CT

Gallery Tour



Beaver's Wake – Raymond Brook Marsh, Hebron, CT

Gallery Tour



Great Egret – Raymond Brook Marsh, Hebron, CT

Gallery Tour



“Kermit” Green Frog – Raymond Brook Marsh, Hebron, CT

Gallery Tour



Mates: Cecropia Moths – Raymond Brook Marsh, Hebron, CT

Gallery Tour



Pink Lady's Slipper Orchids - Hebron, CT

Gallery Tour



Poke Milkweed (*Asclepias exaltata*) – Route 85 Trailhead, Hebron, CT

Gallery Tour



Bee Balm – Route 85 Trailhead, Hebron, CT

Gallery Tour



Sun Pillar at Dawn – Raymond Brook Marsh, Hebron, CT

Gallery Tour



“Arguing” Tree Swallows – Raymond Brook Marsh, Hebron, CT

Gallery Tour



Ornamental Iris – Route 85 Trailhead, Hebron, CT

Gallery Tour



Queen Anne's Lace – Raymond Brook Marsh, Hebron, CT

Gallery Tour



Poke Berries - Colchester, CT

Gallery Tour



Poke Berries - Colchester, CT

Gallery Tour



Cellar Hole: Reminder of Times Past - Hebron, CT

Gallery Tour



Abandoned United Distillers Chimney - Hebron, CT

Gallery Tour



Green Heron – Cranberry Bog, East Hampton, CT

Gallery Tour



“Rudolph” Cedar Waxwing with Serviceberry – Raymond Brook Marsh, Hebron, CT

Gallery Tour



Frosted Oak Seedlings - Hebron, CT

Gallery Tour



Firebush - Hebron, CT

Gallery Tour



Japanese Maple Leaf – Route 85 Trailhead, Hebron, CT

Gallery Tour



Fern Fronds at Winter's End – Raymond Brook Marsh, Hebron, CT

Gallery Tour



Tree Swallows Take Flight – Raymond Brook Marsh, Hebron, CT

Gallery Tour



Painted Turtle Lineup – Raymond Brook Marsh, Hebron, CT

Gallery Tour



Eastern Chipmunk – Raymond Brook Marsh, Hebron, CT

Gallery Tour



Spittlebugs - Hebron, CT

Gallery Tour



Common Milkweed Kaleidoscope

Gallery Tour



Cecropia Mates Kaleidoscope

Gallery Tour



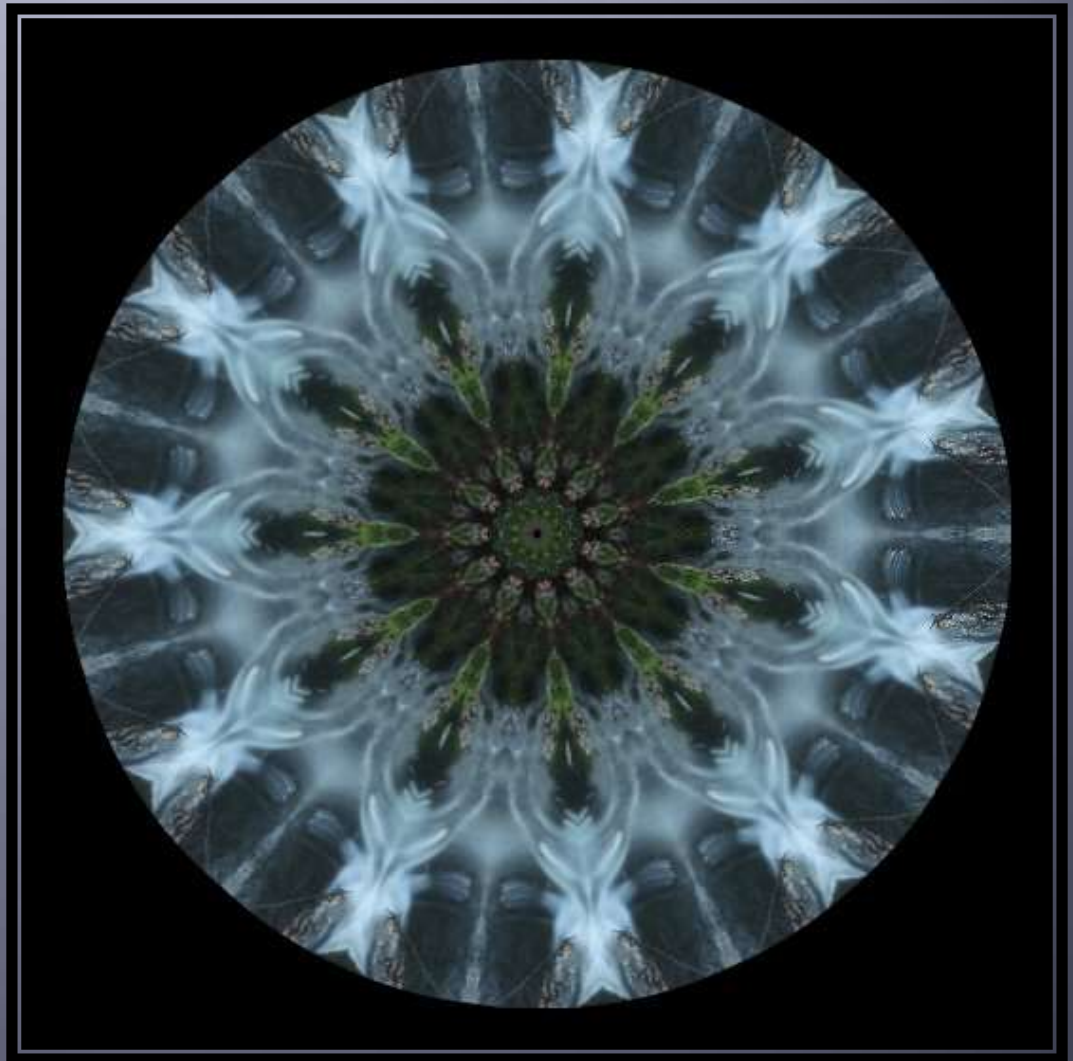
Great Egret Kaleidoscope



Gallery Tour



Trailhead Brook Kaleidoscope



Gallery Tour



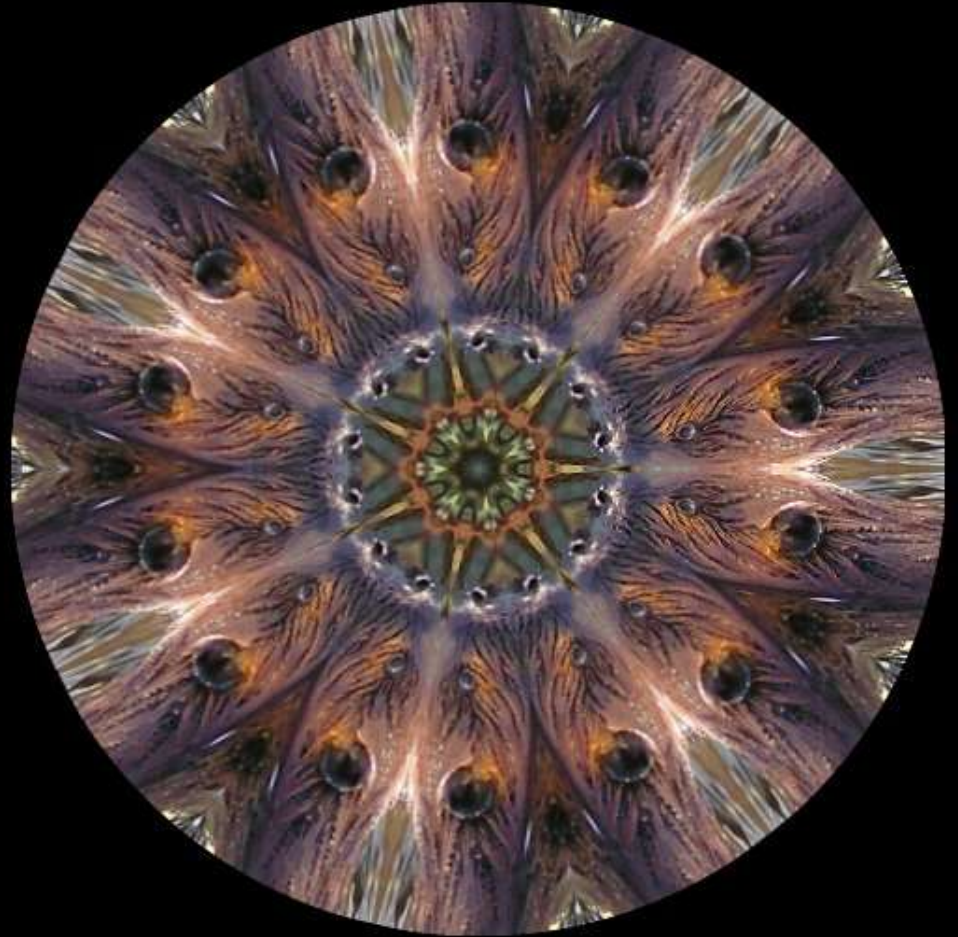
Beaver's Wake Kaleidoscope



Gallery Tour



Beaver's Wake Kaleidoscope



Gallery Tour



Bald Eagle Kaleidoscope

Gallery Tour



Off-Trail

Red-shouldered Hawk Dining Out (Part 1) - Marlborough, CT

Gallery Tour



Off-Trail

Red-shouldered Hawk Dining Out (Part 2) - Marlborough, CT

Gallery Tour



Off-Trail

Red-shouldered Hawk Dining Out (Part 3) - Marlborough, CT

Gallery Tour



Off-Trail

Luna Moth Emerges (Part 1)- Marlborough, CT

Gallery Tour



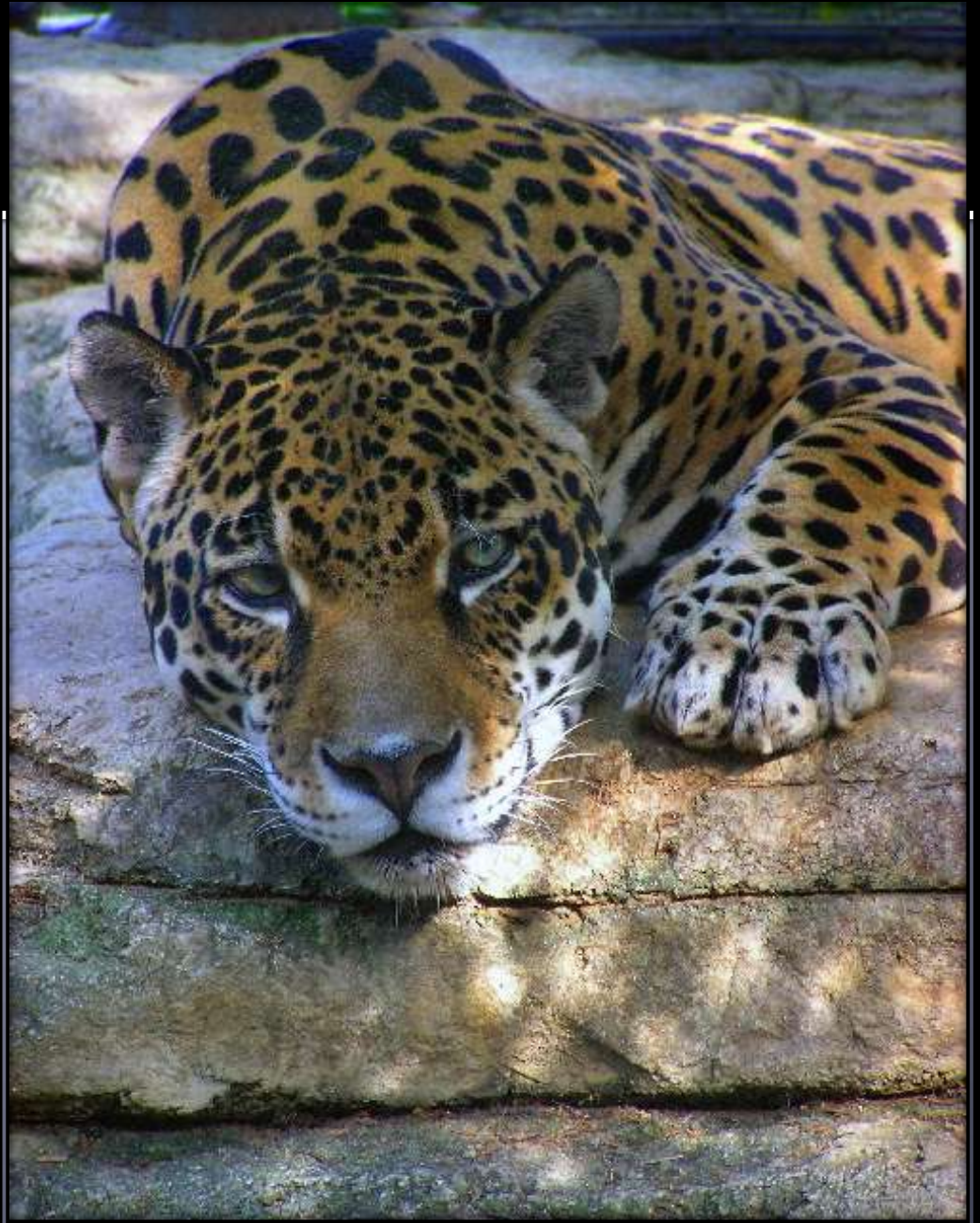
Off-Trail

Luna Moth Emerges (Part 2)- Marlborough, CT

Gallery Tour

Off-Trail

Jaguar at San Antonio Zoo –
San Antonio, Texas



Gallery Tour

Off-Trail

Alpine Asters - Marlborough, CT



Gallery Tour



Off-Trail

Cultivated Dwarf Iris - Marlborough, CT

Cameras

- “Nice picture. You must have a great camera!”



Cameras - Small, medium & large sensors



SX40-IS



EOS 5D MkII



EOS 7D

Small Sensor
Fixed Lens
35x Optical Zoom
24-840mm
3x4 "native" Aspect Ratio
HD Video; Slow Motion



Full Frame Sensor
Multiple Lenses
2x3 Aspect Ratio
HD Video

APS-C Sensor
Multiple Lenses
2x3 Aspect Ratio
HD Video

Conditions

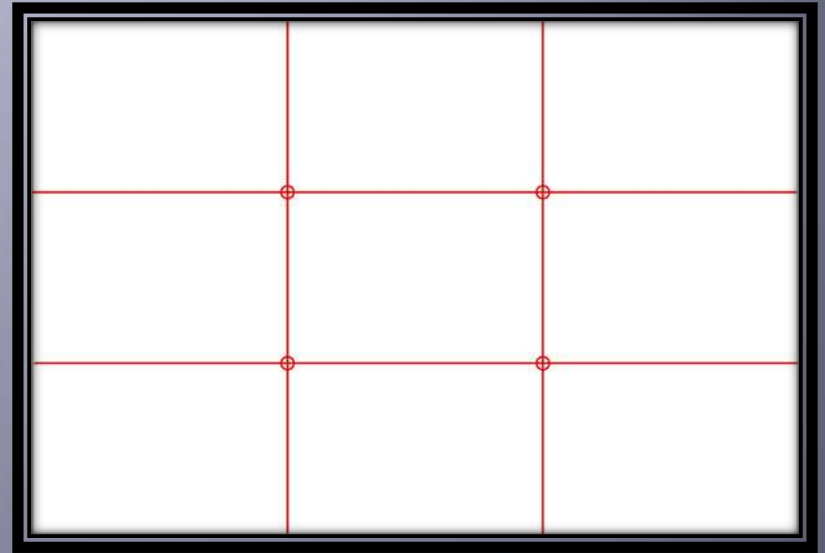
- Time of Day
- Backlighting:



- Cloudy versus Sunny
- Wind: The Enemy!
- Patience and Persistence
 - Digital Pictures are Free! Take Plenty.
 - Delete the Junk!

Composition

- Framing: Rule of Nines



Composition

- Framing: Rule of Nines
- Rules are Meant to be Broken



Composition

- Drawing the eye...



Composition

- Aspect Ratios – from the camera

2x3



3x4



Panorama
“stitched”



Composition

- Sometimes less is more



Composition

- Figure and Ground



Composition



- Horizons



Composition



- Framing for motion



Composition

- Framing for “gaze”



Composition



- Avoid “amputations”



Technical

- Depth of Field



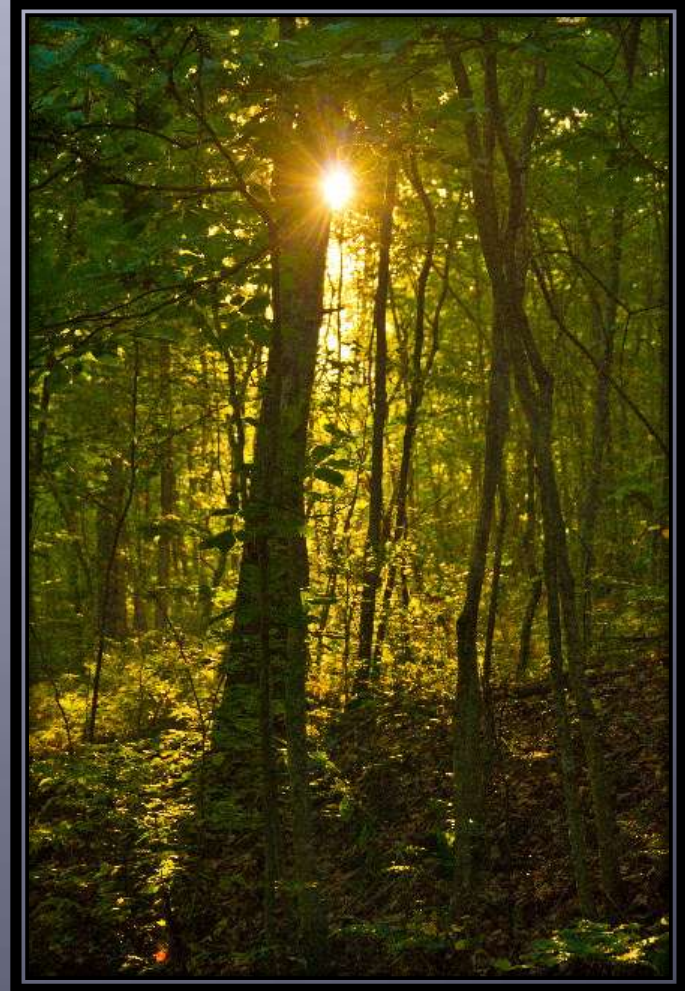
Technical

- Macro Photography



Technical

- RAW versus JPG



Editing

- “Color Temperature” and White Balance



Cool

Warm



Editing

- Saturation



Original

Editing

- Sharpening



Editing

- Why Crop?:

- Aesthetics



- Print Aspect Ratios:

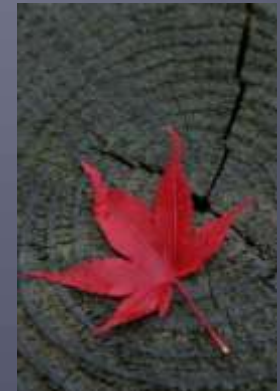
4x6

5x7

8x10

11x14

12x18



Advanced Techniques

- HD Video
- Time-Lapse →
- 3D
- Lightning →
- High Dynamic Range (HDR)
- Helicon Focus →
- Panoramas
- Infrared →



Contact Info:



Stan@performance-vision.com

860-295-9711