

Along the Air Line...

Nature Photography on the Air Line Trail

Stan Malcolm



Along the Air Line...
<http://performance-vision.com/airline/>

StanMalcolmPhoto.com



Stan Malcolm



Eastern Connecticut photographer Stan Malcolm focuses on the natural world. He finds the extraordinary in objects and places we often overlook. An entomologist by training, Stan's photos have earned many juried awards and been published in newspapers, textbooks, and scientific publications.

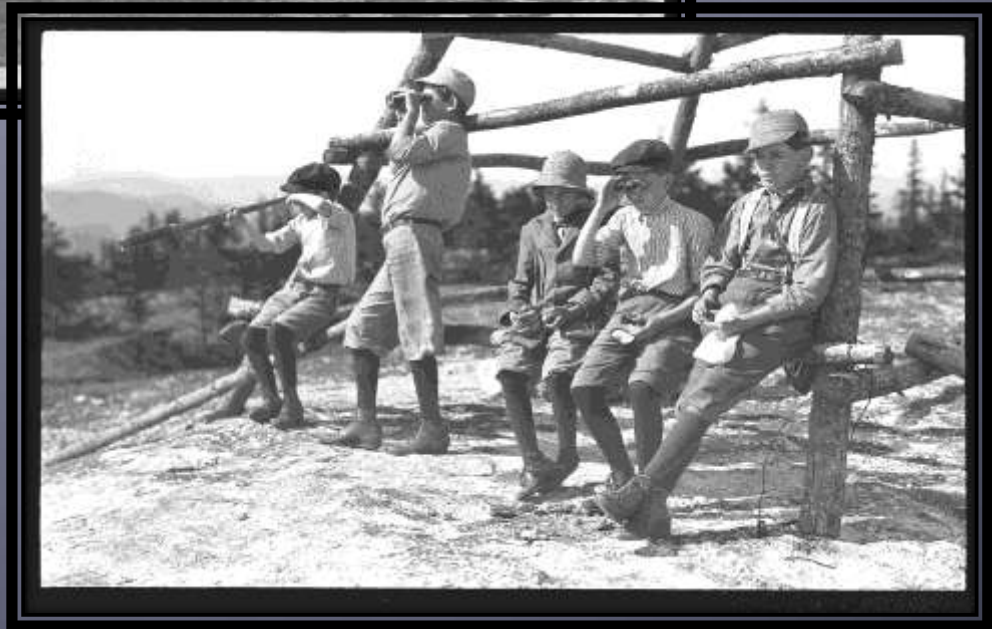


Stan carries on a family tradition of photography.

My Great
Grandfather's work

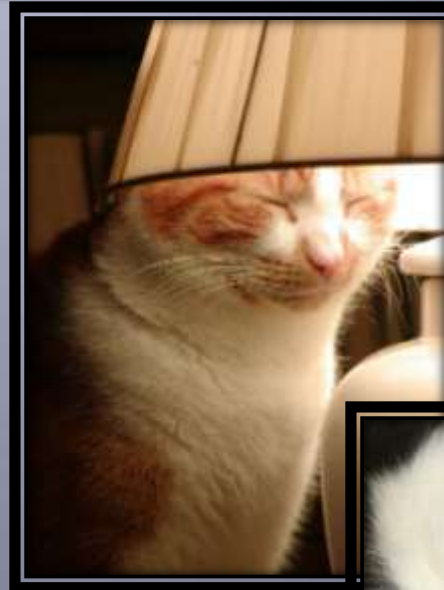


My
Grandfather's
Photos



Stan's General Photography

- StanMalcolmPhoto.com



The Air Line Trail

The Air Line was once a railroad renowned for its relatively straight course from Boston to New York - "as if by a line drawn through the air." You can still find lumps of coal left over from the steam era. Today the rail bed has been converted to a Connecticut linear park and hiking trail.



Stan's "Along the Air Line..." web site

- www.performance-vision.com/airline/



- Over 4,000 photos taken in all seasons
- Plants, Animals, Landscapes – everything you're likely to see on the trail

Trail Brochure Available at Town Halls in East Hampton, Colchester, Hebron, and Lebanon, CT – or as a PDF at Stan's web site.

The Air Line Trail

A Connecticut Greenway, State Linear Park, and Multipurpose Trail for non-motorized users

Guide & Map for the Towns of East Hampton, Colchester, Hebron and Lebanon

East Hampton

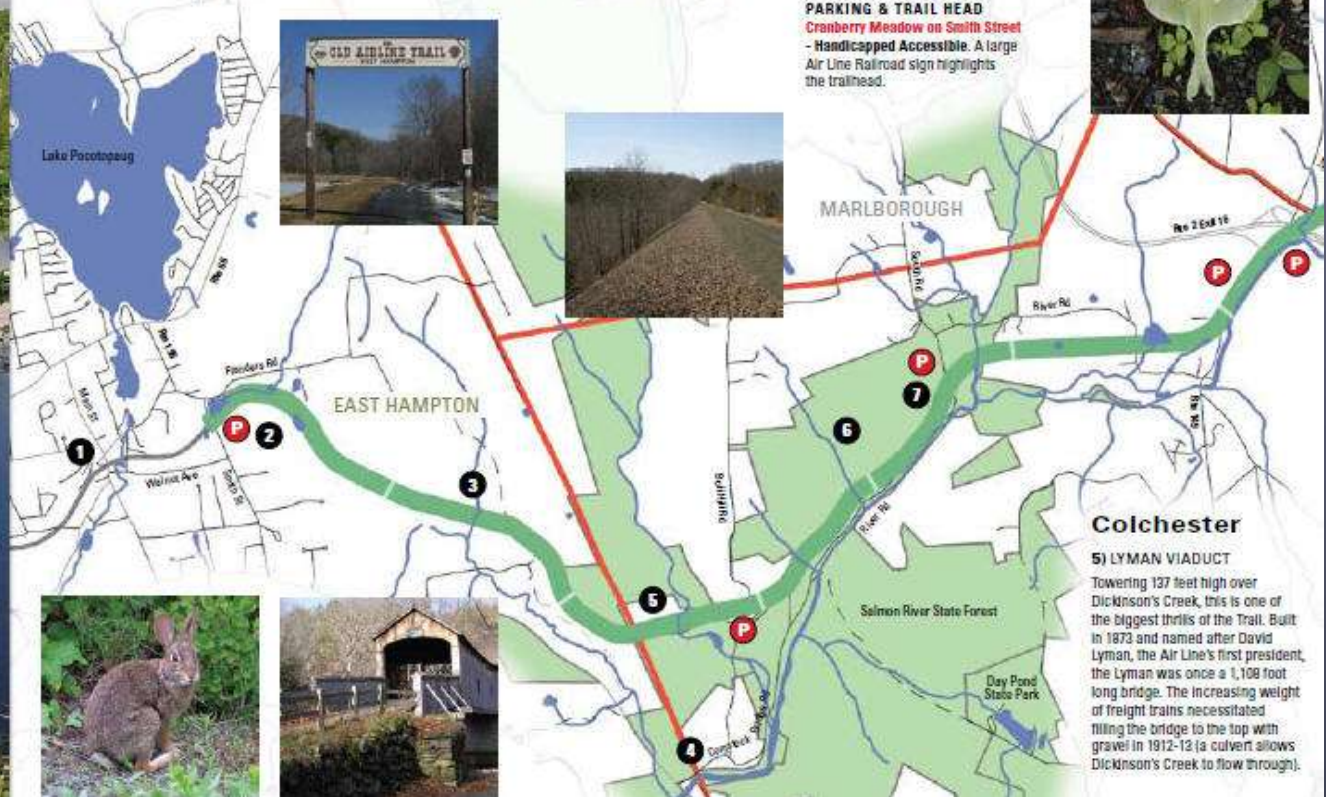
1) BELL TOWN VILLAGE CENTER & LAKE POCOTOPAUG
East Hampton is called "Bell Town" as it was the center of the bell making industry for the country. Taking a detour off the Trail at Cranberry Meadow onto Smith St. and traveling west leads to the Bell Town Village Center, a mecca for antique shoppers. Traveling north leads to the business center of East Hampton and Lake Pocotopaug. Caution is advised on busy roads.

2) CRANBERRY BOG
This pond offers benches for resting; the sights of wildflowers and sounds of bullfrogs in the summer, and picturesque ice skating and hockey games in the winter. Cranberry Meadow and Bog was once a natural cranberry producing bog. During the 1920's and 30's, the cranberries were harvested, transported to grocers, and bartered for groceries.

3) RAPALLO VIADUCT
Built in 1873 (as was its sister, the Lyman Viaduct, 1-1/2 miles east in Colchester), the Rapallo bears the name of a railroad director and was built for two train tracks. Originally a 1,380 ft. long bridge 60 ft. high above Flat Brook, the increasing weight of freight trains necessitated filling underneath it in 1913. The spectacular views of the marsh to the north and other natural surroundings make this a rare treat.

4) COMSTOCK BRIDGE
The Comstock Bridge was built in 1791 and rebuilt in 1860. It is one of only three remaining covered bridges in Connecticut. The Comstock Bridge links East Hampton and Colchester and is approximately 1-1/4 miles south of the intersection of Colchester's Bull Hill Road and the Air Line Trail. The bridge is open to pedestrian traffic and has a picnic area nearby.

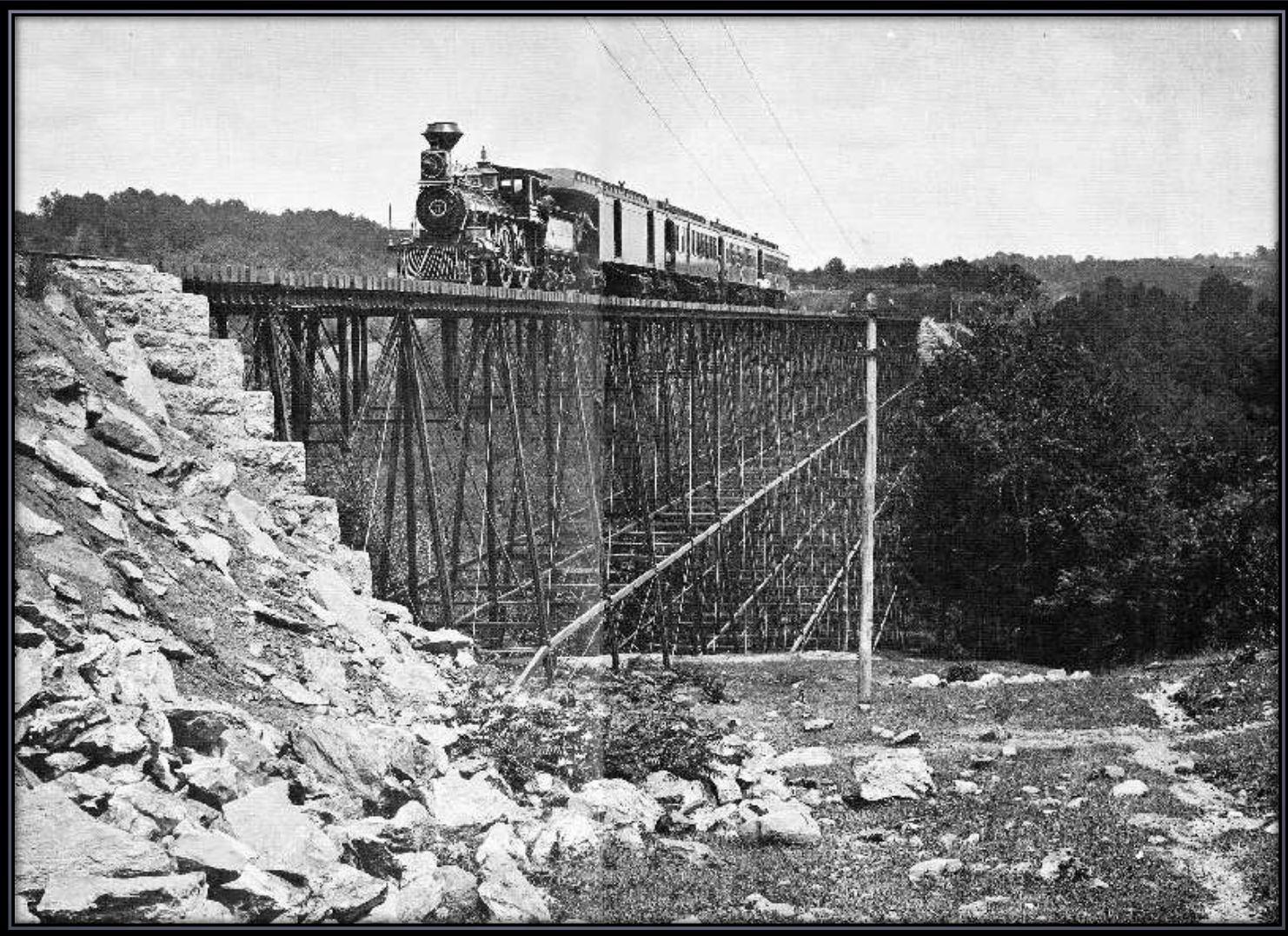
PARKING & TRAIL HEAD
Cranberry Meadow on Smith Street - Handicapped Accessible. A large Air Line Railroad sign highlights the trailhead.



Highlights – Cranberry Bog



Highlights – Lyman Viaduct “then”



Highlights – Lyman Viaduct “now”



Highlights – Minor Waterfalls



Highlights – Rock Cuts



Highlights – River Road Bridge

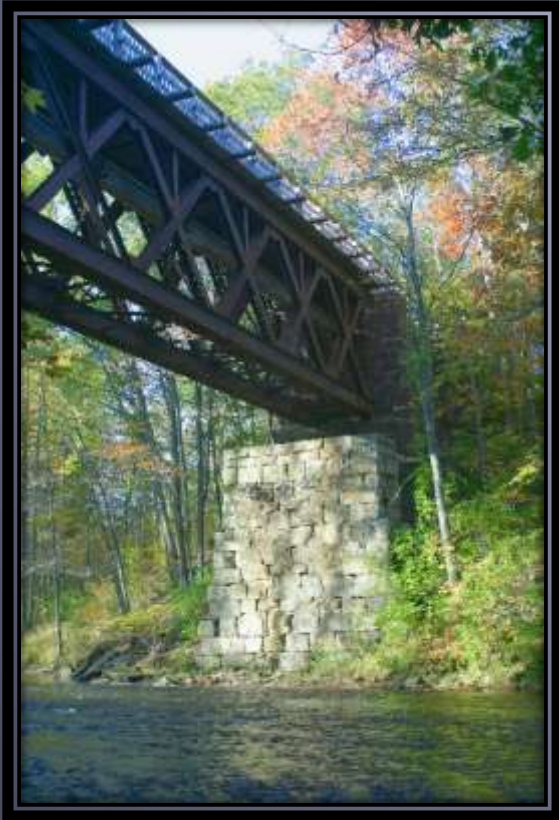


Brownstone, Dated 1887.

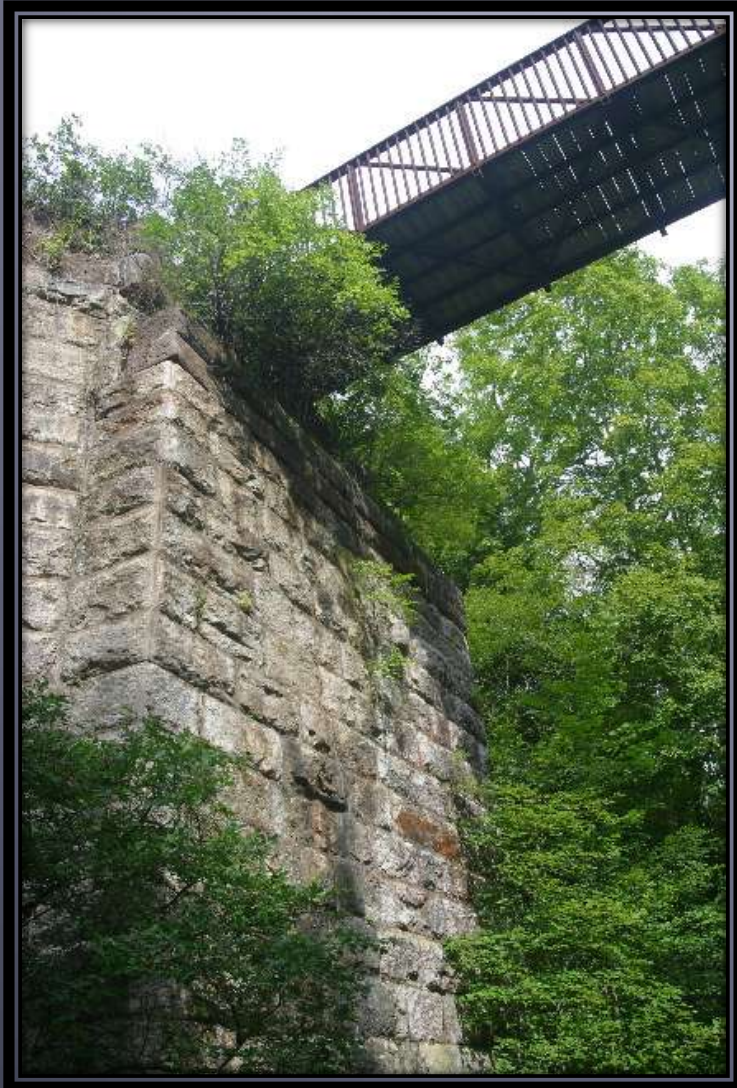
Each stone in the arch is numbered, suggesting that some portions were pre-cut before on-site assembly.



Highlights – Blackledge River Bridge



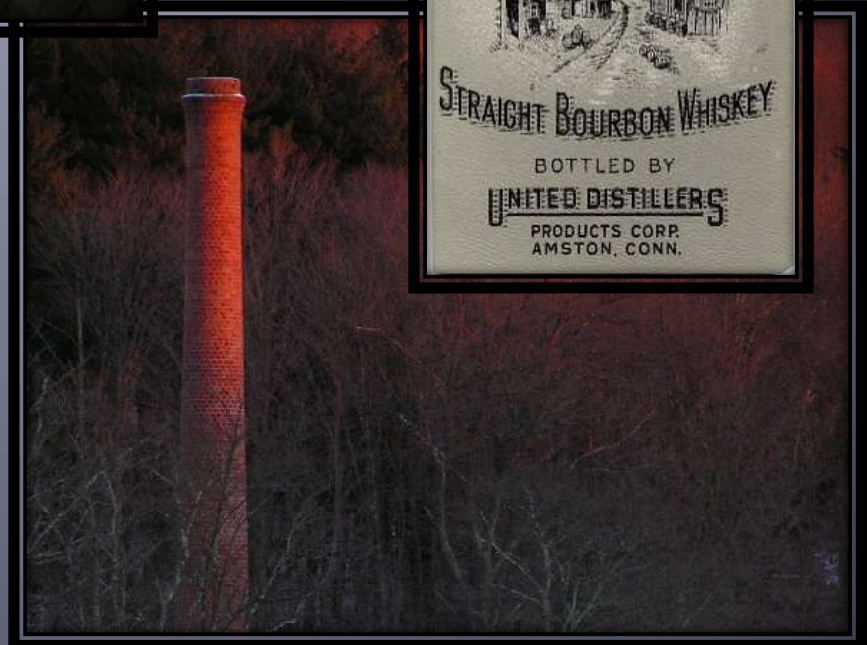
Highlights – Jeremy River Bridge



Highlights – Grayville Falls



Highlights – United Distillers ruins



Highlights – Cellar Holes



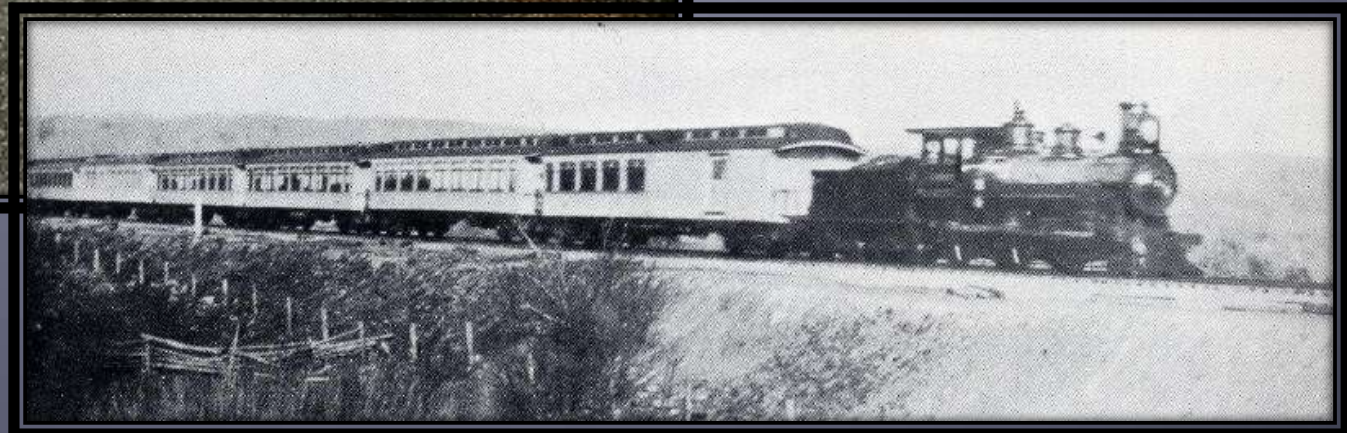
Highlights – Raymond Brook Marsh



Highlights – Ghost Run



Around Halloween, the trail hosts the Ghost Run, named in honor of the Ghost Train which ran white coaches through the night over 100 years ago.



Highlights – Lebanon to Willimantic



Cameras

- “Nice picture. You must have a great camera!”



Cameras - Small, medium & large sensors



SX30-IS



EOS 5D MkII



EOS 7D







Small Sensor
Fixed Lens
35x Optical Zoom
24-840mm
3x4 Aspect Ratio
HD Video

APS-C Sensor
Multiple Lenses
2x3 Aspect Ratio
HD Video

Full Frame Sensor
Multiple Lenses
2x3 Aspect Ratio
HD Video

Features and Accessories

- Aspect Ratios: 3x4 or 2x3
- Sensor Size:
- Megapixels: Twice as many isn't twice as sharp
- Optical versus Digital Zoom
- One lens versus several? Fixed versus Zoom?
- Camera Bag
- Tripod:
 - Sturdy; Quick Release; Allow Low & High shots

						
Sensor Type	1/2.5"	1/1.8"	2/3"	4/3"	APS-C	35mm
Aspect Ratio	4:3	4:3	4:3	4:3	2:3	2:3
Diagonal (mm)	7.2	8.9	11	22.5	27.3	43.3
Width (mm)	5.8	7.2	8.8	18	22.7	36
Height (mm)	4.3	5.3	6.6	13.5	15.1	24

Flash!

- Forget built-in flash
- On-camera versus off-camera – or both
- Bounce and reflectors
- Telephoto flash
- Macro flash



Conditions

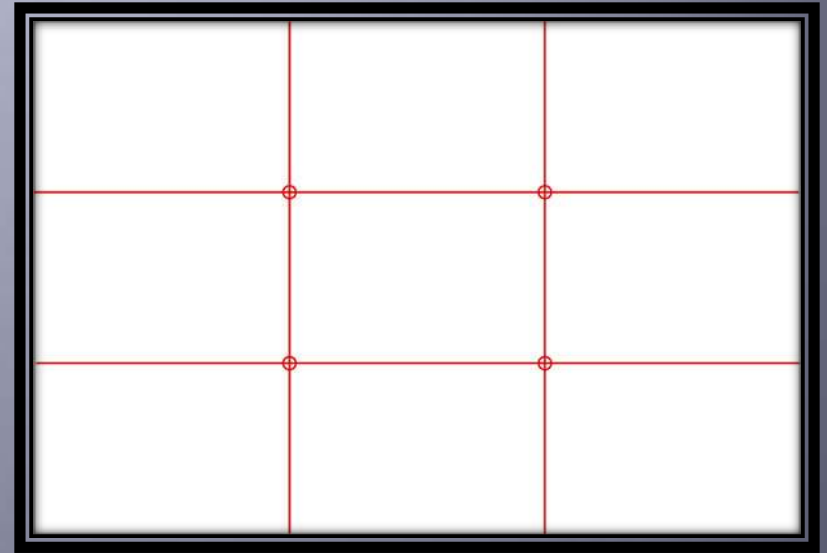
- Time of Day
- Backlighting:



- Cloudy versus Sunny
- Wind: The Enemy!
- Patience and Persistence
 - Digital Pictures are Free! Take Plenty.
 - Delete the Junk!

Composition

- Framing: Rule of Nines



Composition

- Framing: Rule of Nines
- Rules are Meant to be Broken



Composition

- Drawing the eye...



Composition

- Aspect Ratios

2x3



3x4



Panorama



Composition

- Figure and Ground



Composition

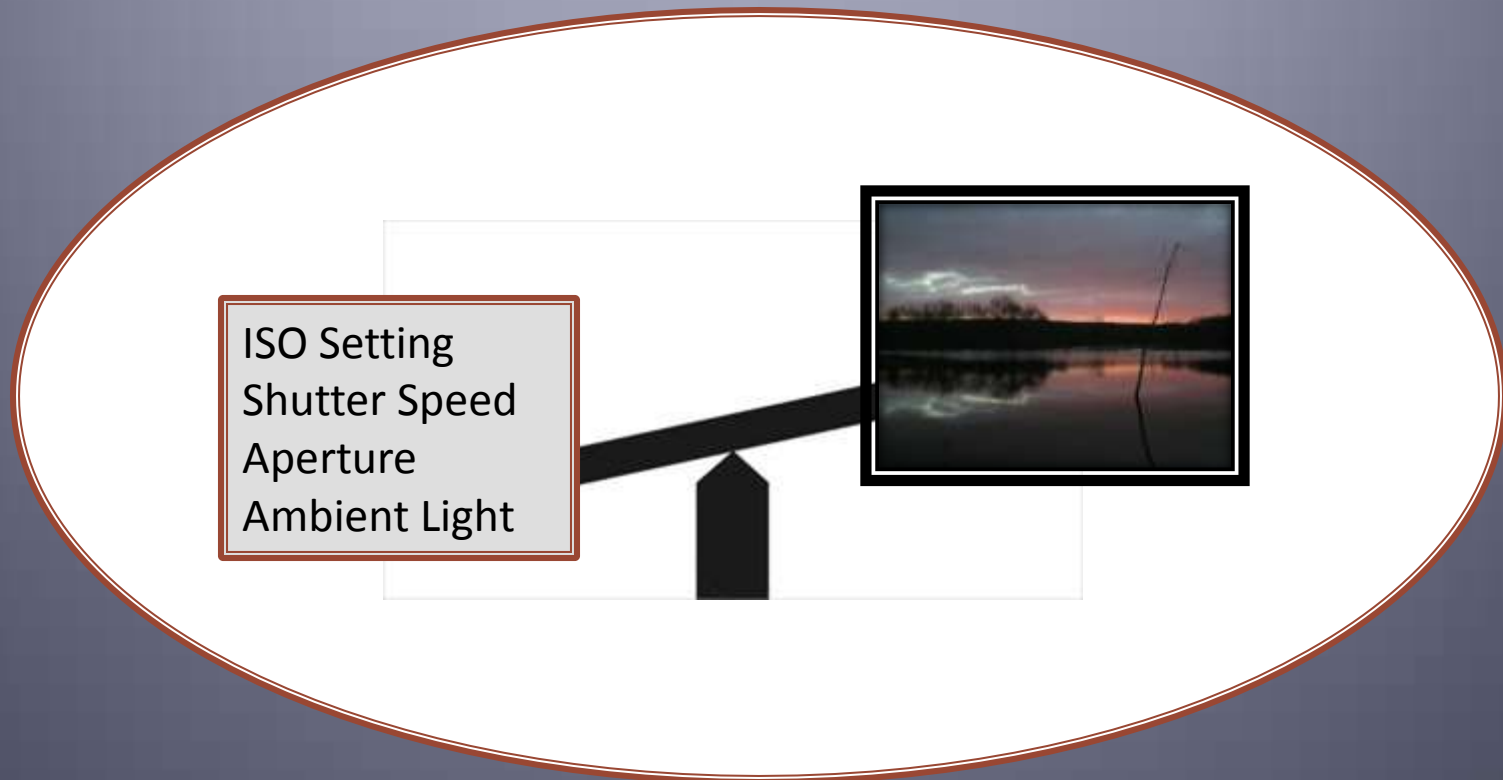


- Horizons



Technical

- A Balancing Act:



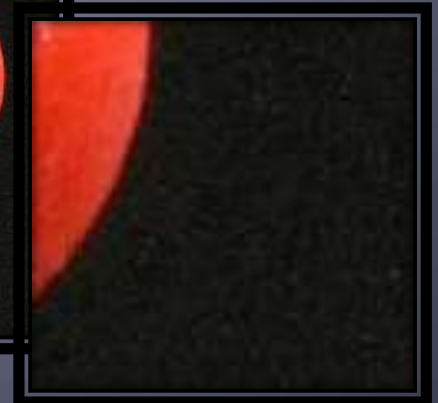
Technical

- ISO Setting:
 - Sensitivity to light: standards set by the International Standardization Organization
 - 100 to 1000 typical; Higher on new cameras



Technical

- ISO Setting:
 - 100 = Low sensitivity; but fine grain (low “noise”)
 - 1000 = High sensitivity; Grrrain!



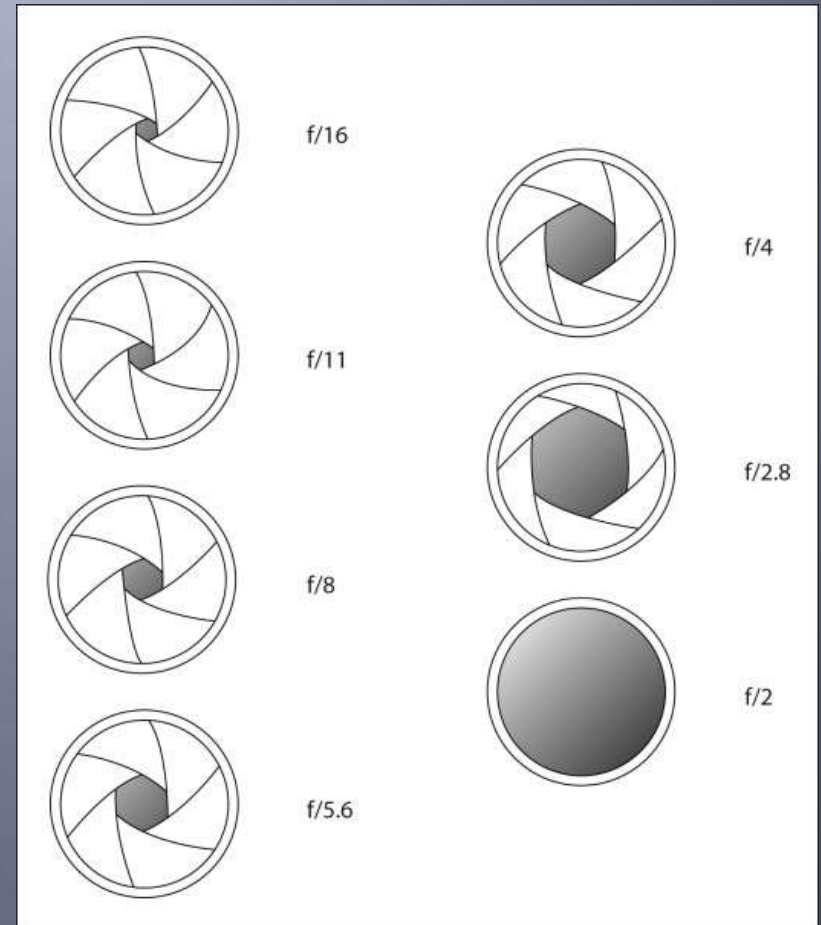
Technical

- Shutter Speed:
 - Low: under $1/60^{\text{th}}$
 - risk blur; deep.
 - Tripod
 - Pan
 - High: over $1/250^{\text{th}}$
 - sharp; shallow.
 - movement:
birds, sports, etc



Technical

- Aperture:
 - f/16 – small aperture, deep depth of field (background in focus)
 - f/2 – large aperture, shallow depth of field (background blurred)



Technical

- Depth of Field



Technical

- Macro Photography



Editing

- Software

CAMEDIA Master Pro

Canon



Editing

- Cropping:



Editing

- Why Crop?:

- Aesthetics



- Print Aspect Ratios:

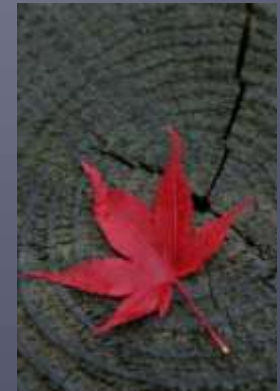
4x6

5x7

8x10

11x14

12x18



Editing

- Resizing: Print versus Screen versus Thumbnail



Editing

- Brightness
- Contrast
- Gamma = Brightness and Contrast correction

Increased Gamma



Original



Decreased Gamma



Editing

- “Color Temperature” and White Balance



Cool

Warm



Editing

- Saturation



Original

Editing

- Sharpening



Advanced Techniques

- HD Video
- Time-Lapse →
- 3D
- Lightning →
- High Dynamic Range (HDR)
- Helicon Focus →
- Panoramas
- Infrared →



Contact Info:



Stan@performance-vision.com

860-295-9711