



ManTech

International Corporation®

Leading the Convergence of National Security and TechnologySM

ManTech University



Systems Engineering & Integration



Information Technology



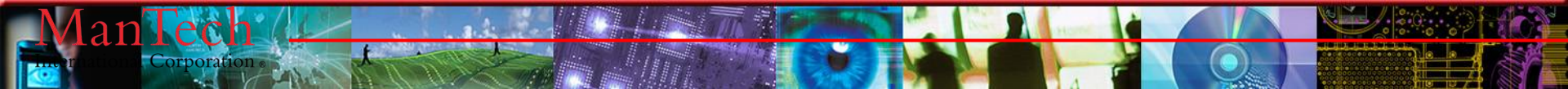
Intelligence Analysis & Mission Operations



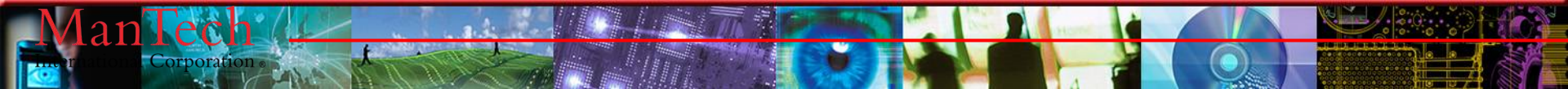
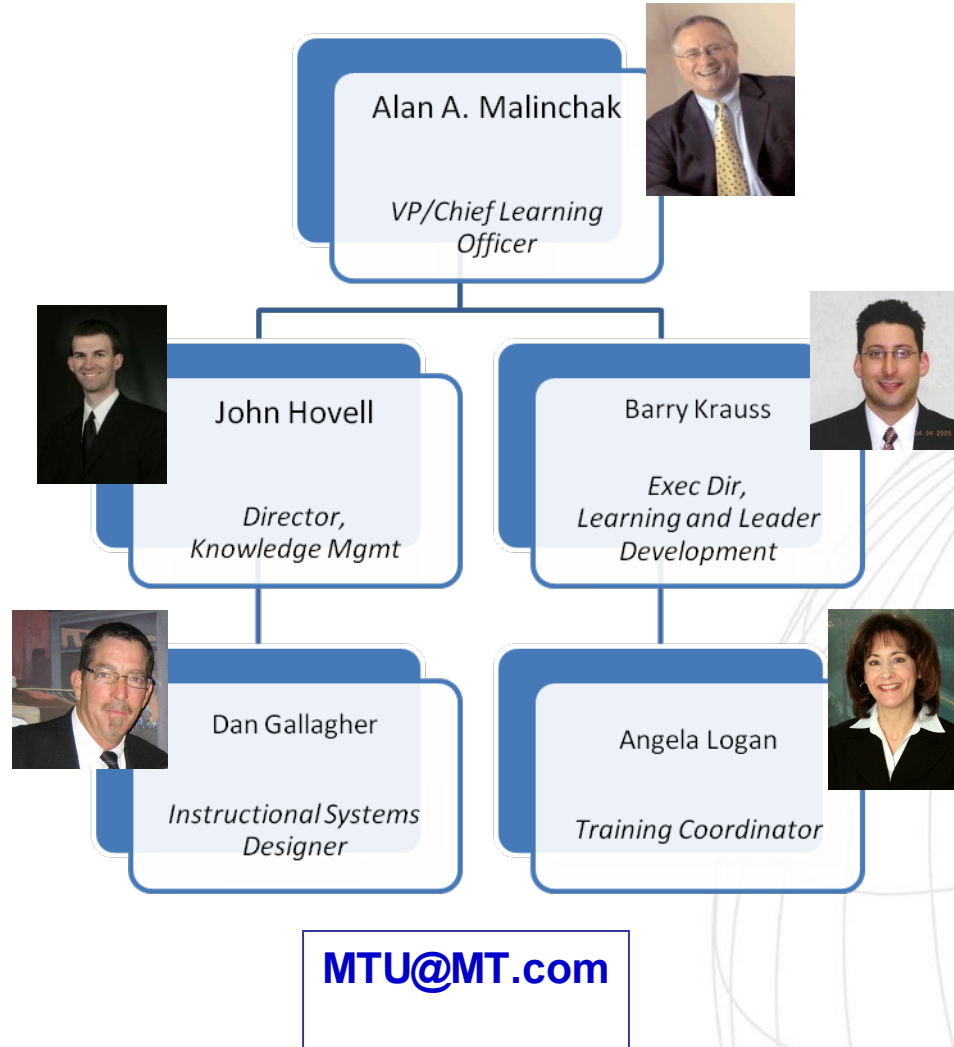
Global Logistics & Supply Chain Management

ManTech University

- MTU Staff
- Areas of Support
- President's Statement
- How to Use LMS
- Professional Certifications
- Educational Opportunities
- Biweekly Emails

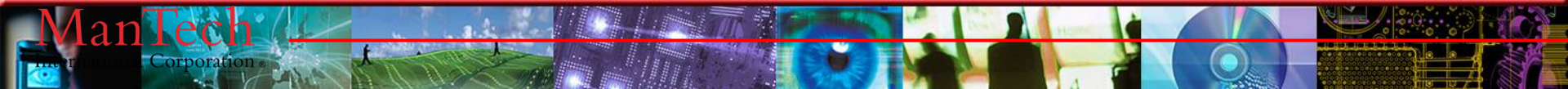


MTU Staff



Areas of MTU Expertise

ManTech University (MTU)	Learning Management	Knowledge Management	Leadership Development
Educational and training opportunities	On-line system for employees to register and attend courses	Tools and techniques that foster a knowledge sharing culture	Opportunity to develop and hone leadership skills, qualities, traits
On-line courses, classroom training, seminars	Topics include: Interpersonal Skills, Project Management, Information Technology, Leadership, Safety, Business Development, Communications,	Includes: Communities of Practice, ManTechpedia, Better Practices Transfer, After Action Reviews	Includes: “EnVisioneer” Program (Leadership Development courses and activities); and High Potential Leadership Program being developed
Personal and professional development	Contracts, and many others. Also provides: MTU certificates, tracking of certifications, eMVP alignment, ROI	Concept is to “connect those who know with those who need to know”	

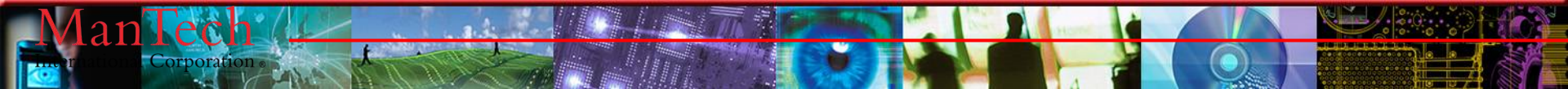


President's Statement



“ManTech International Corporation is committed to our employees' personal and professional growth and development. ManTech University is an invaluable asset that gives employees the opportunity to further their career at ManTech. The development of our employees through ManTech University will identify our future leaders and provide the foundation for our continued success.”

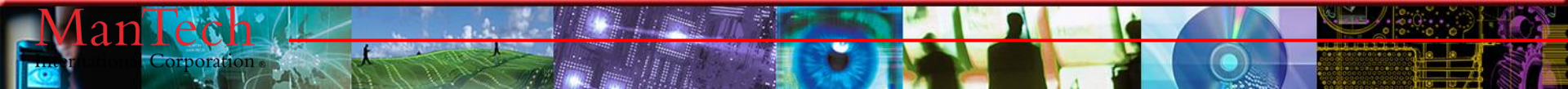
*Robert A. Coleman
President/COO*



How to Use the Learning Management System

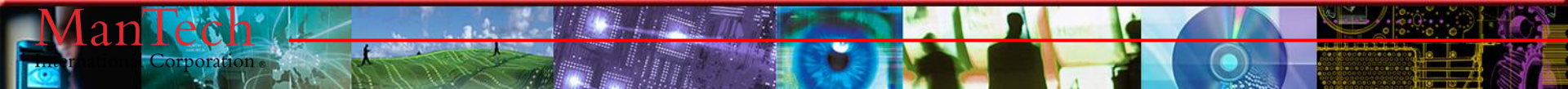
Go to

1. <http://net.mantech.com>
 - a. Must log onto Portal
2. Click on MTU logo
3. Browse/Search Catalog
4. Enroll in Course
 - a. Classroom
 - b. Web Based
5. Launch the Course



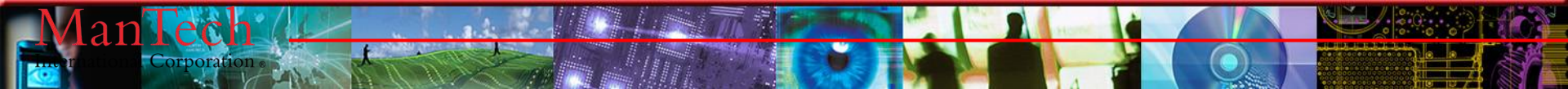
Your Professional Certifications & MTU

- MTU is the central repository of over 150 professional certifications important to ManTech
 - Submitting your certification to the LMS
- MTU is a Project Management Institute (PMI) Registered Education Provider (REP)
 - Maintain your certification status through MTU courses



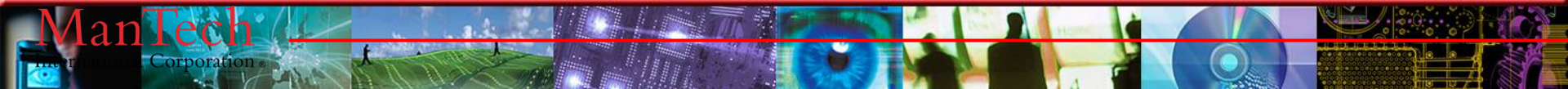
Academic and Professional Educational Opportunities Through MTU

- MTU has alliances that provide discount tuition to all employees and immediate family members for the following universities:
 - Bellevue University
 - Capella University
 - Colorado Technical University Online
 - Kaplan University
 - National Louis University
 - Stevens Institute of Technology
 - Strayer University
- ManTech provides Tuition Reimbursement
 - Contact your HR Representative



Professional Education Opportunities through Discounted Training Vendors

- MTU works with the following training vendors to provide discounts on both public and on-site courses and programs
 - A
 - B
 - C
 - D
 - E



Bi-Weekly Emails

- MTU communicates with all ManTech employees on a bi-weekly basis through the “MTU Newsletter”
- MTU email will arrive every payday in your email
- Please help us keep the newsletter relevant with your needs and expectations through mtu@mantech.com
- More Info about ManTech at *T+D Magazine*, March 2009

